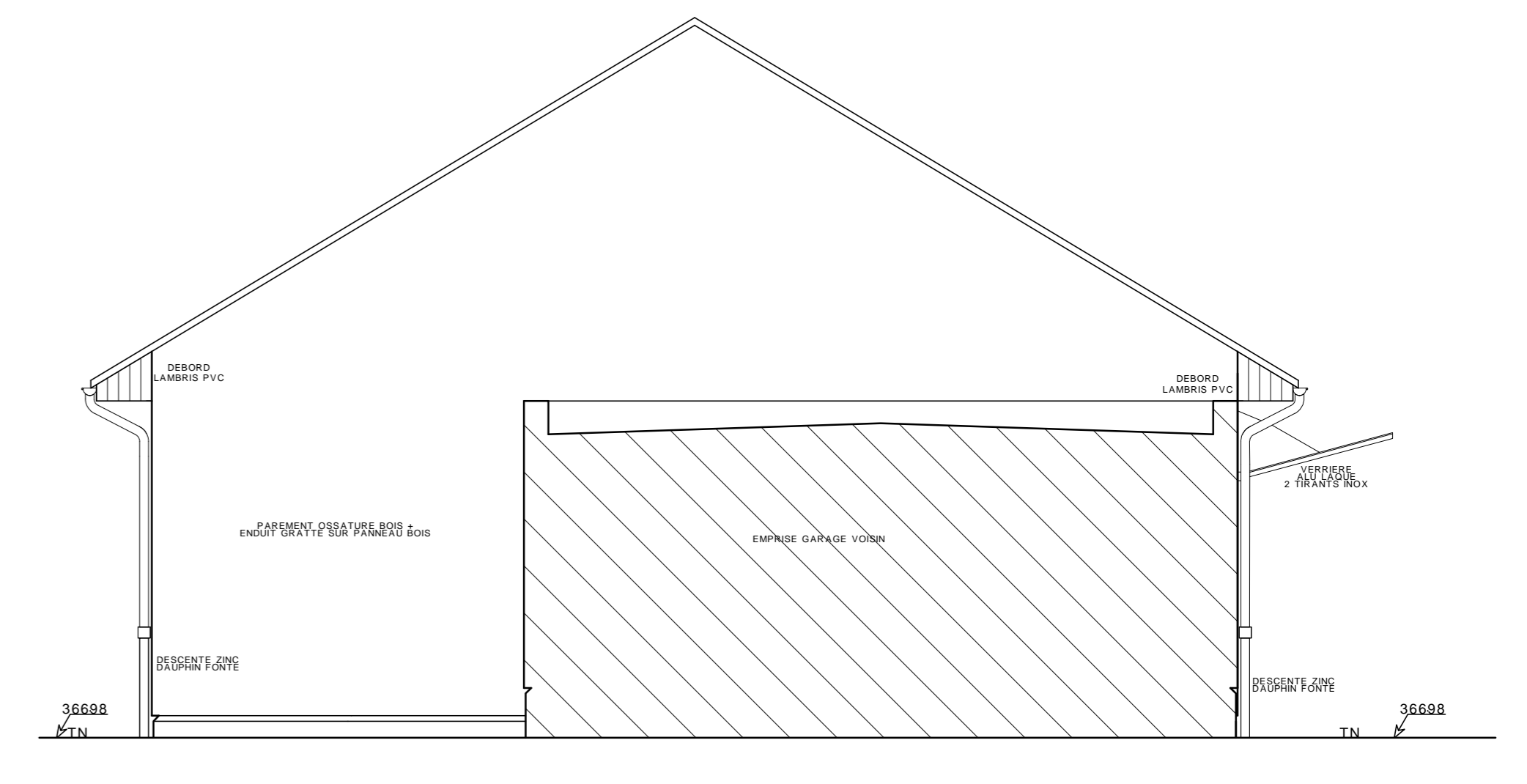


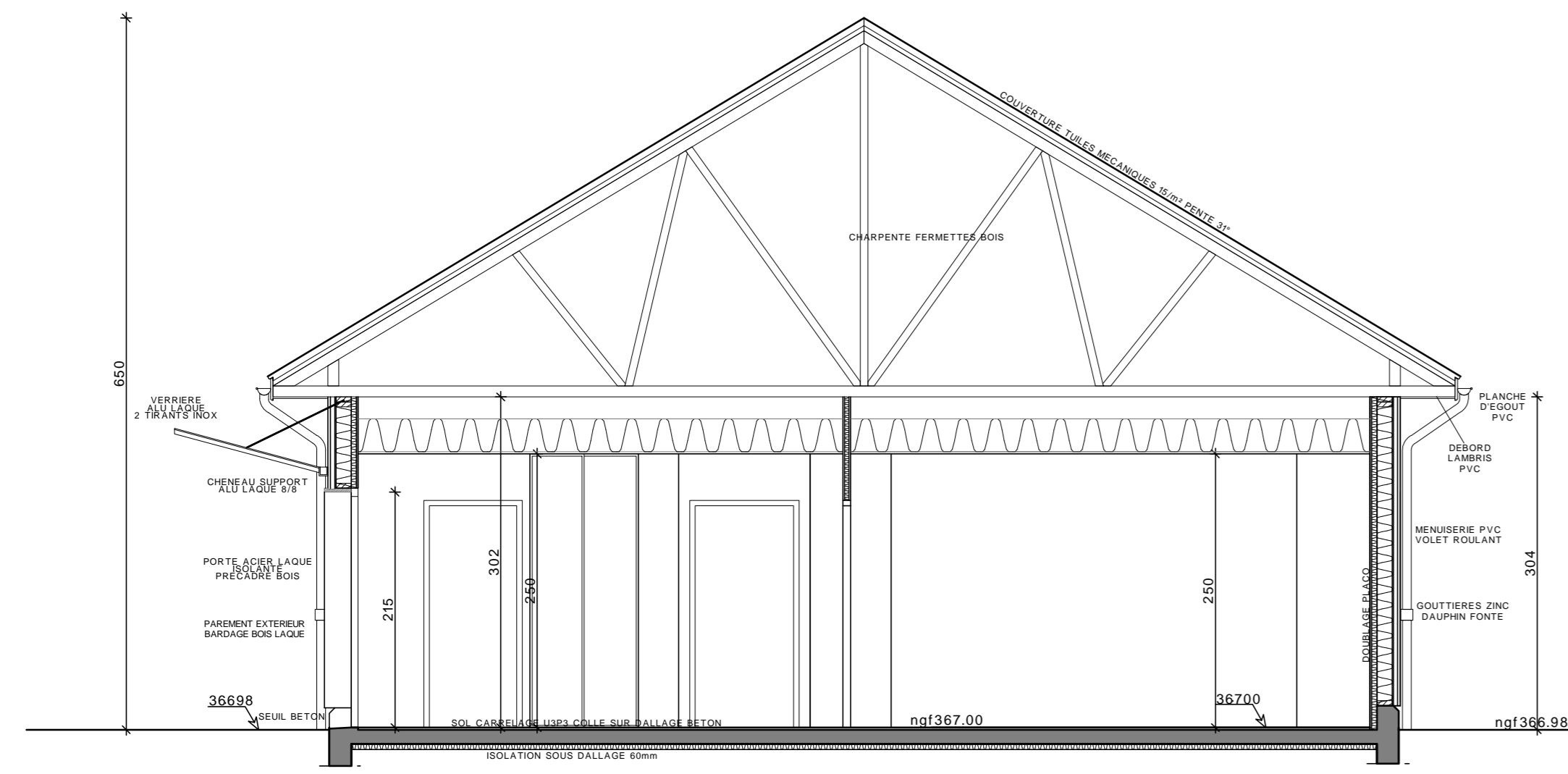
FACADE NORD-OUEST



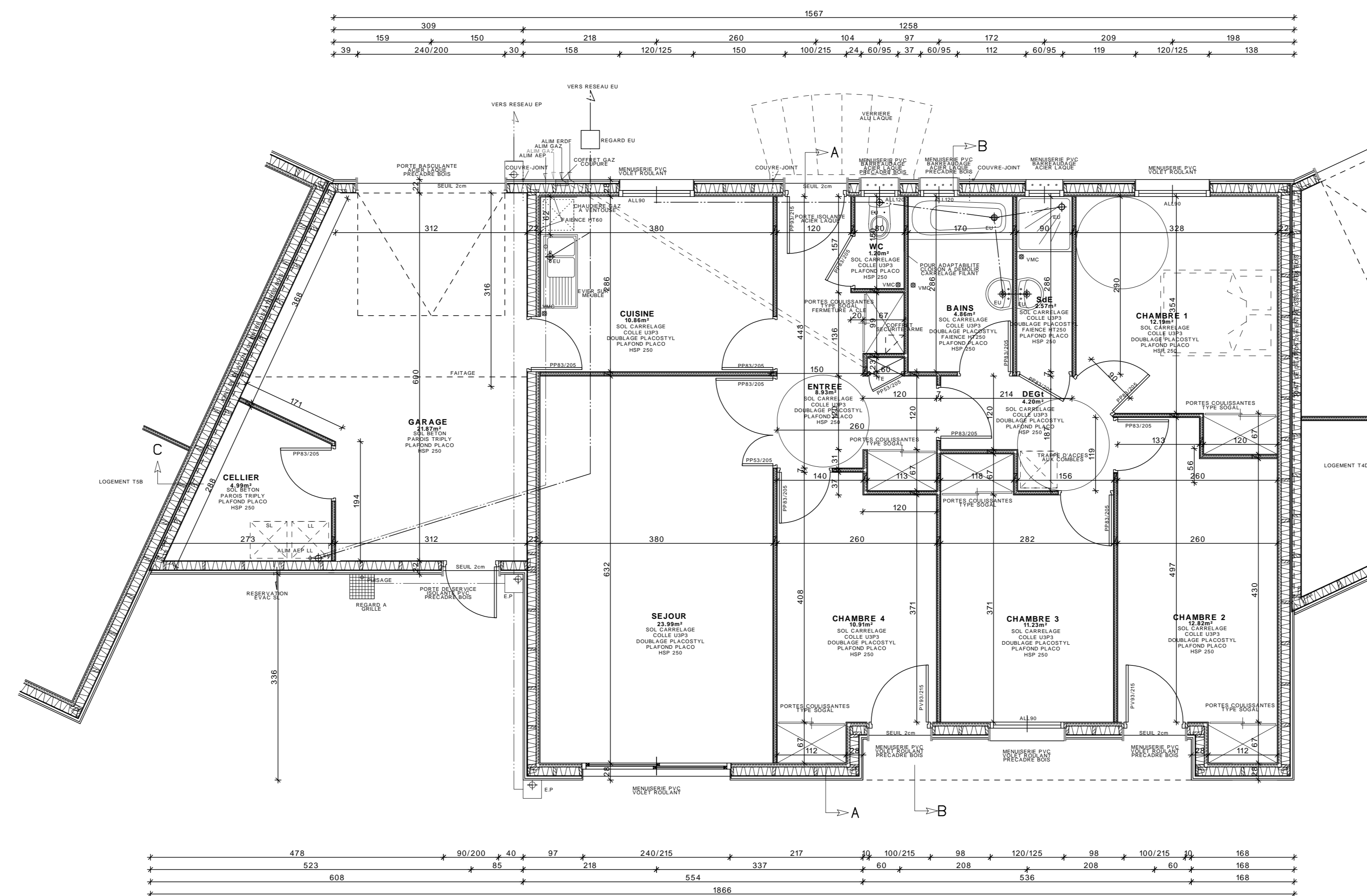
FACADE SUD-EST



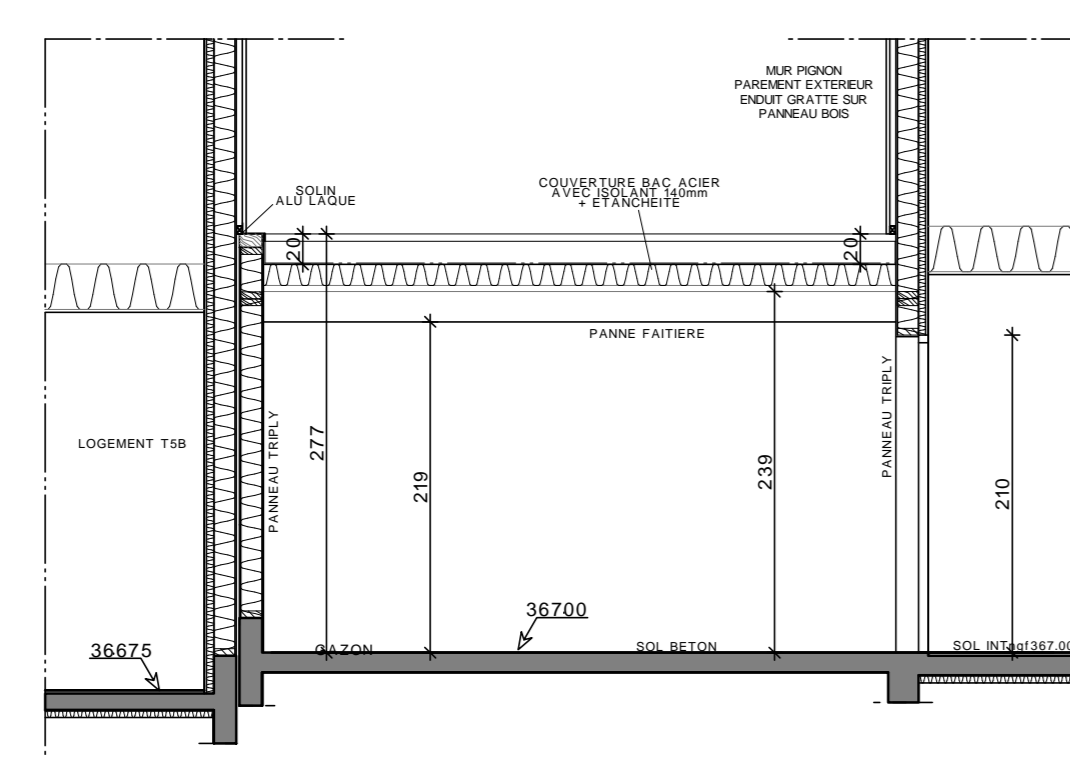
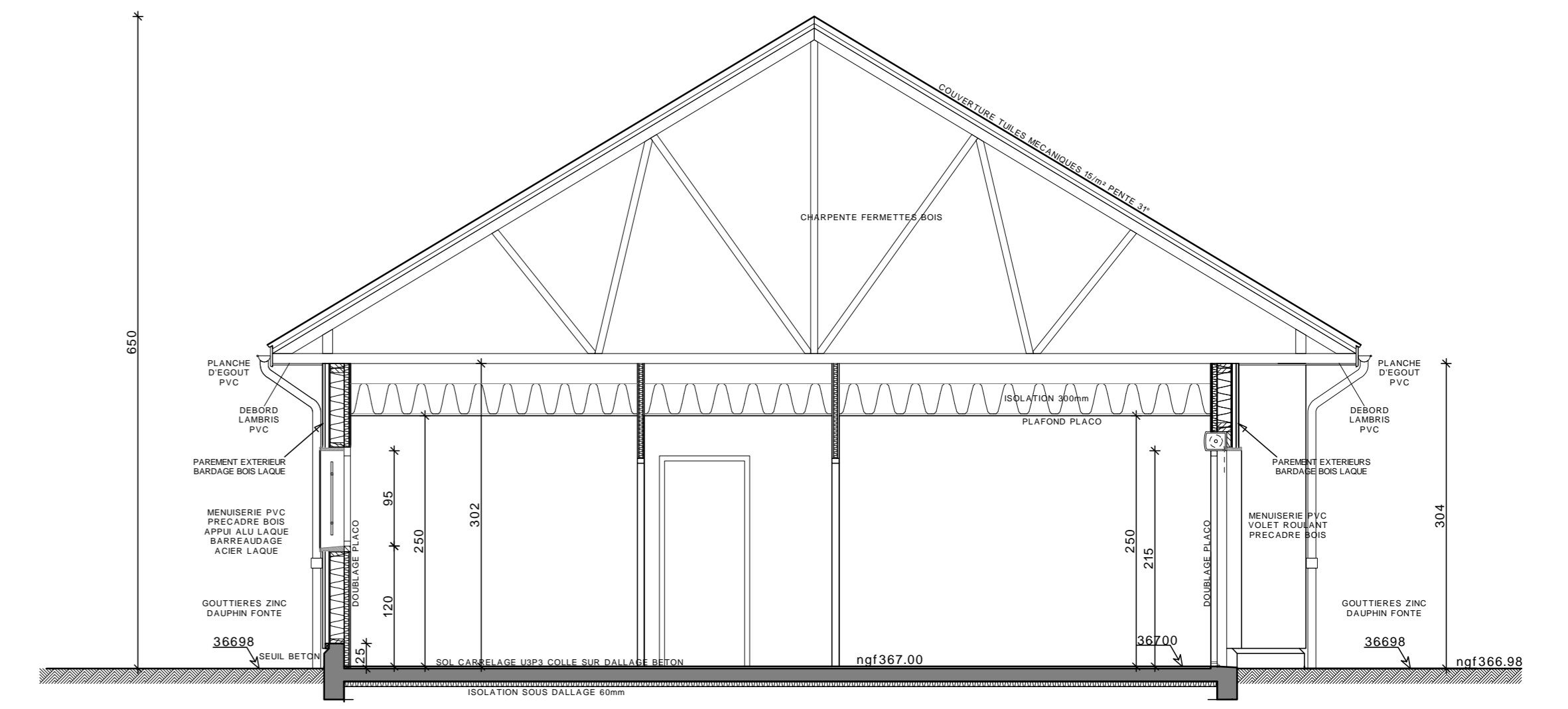
FACADE SUD



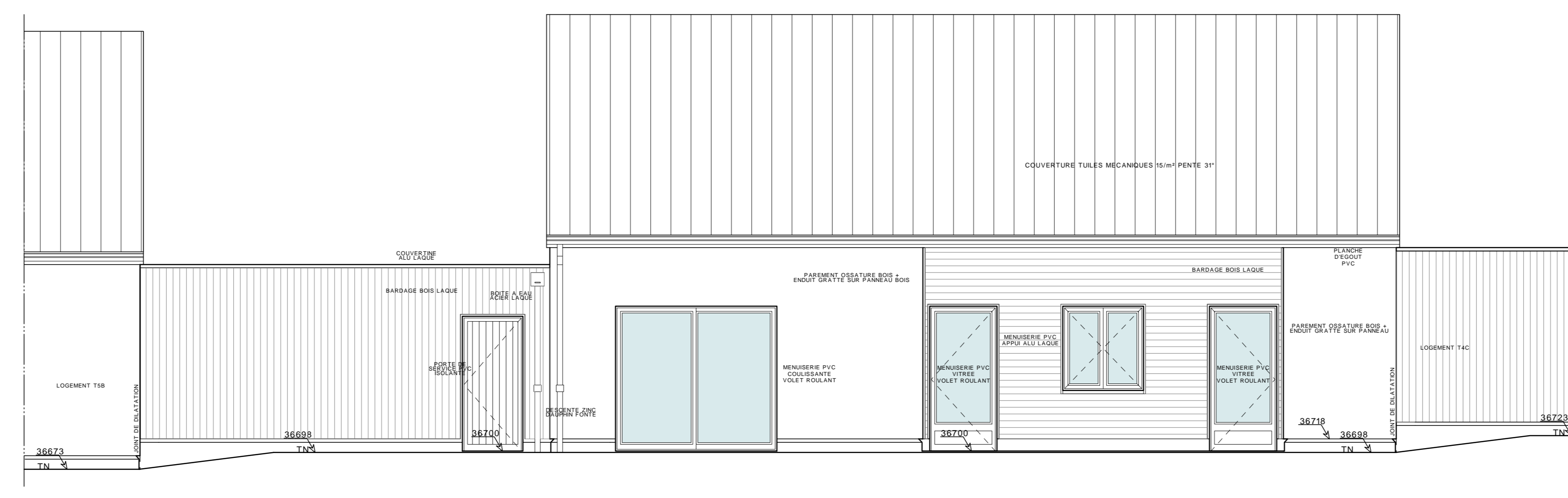
COUPE A



PLAN LOGEMENT T5B



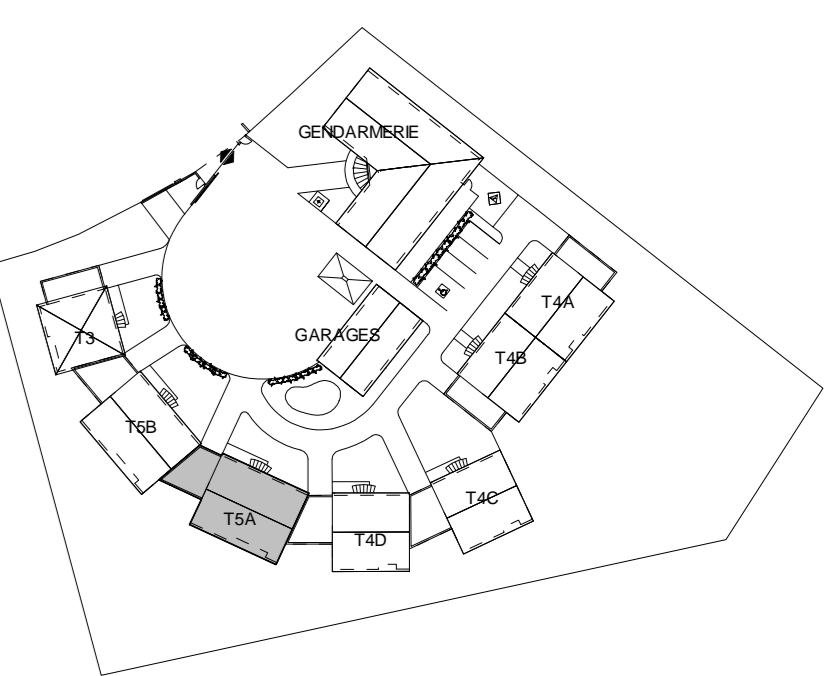
COUPE C



FACADE SUD

| SURFACES UTILES | |
|-------------------|-----------------|
| ENTREE | 8,30m² |
| WC | 1,20m² |
| CUISINE | 10,80m² |
| DE JOUR | 23,90m² |
| DESHABILLANT | 4,20m² |
| CHAMBRE 1 | 12,10m² |
| CHAMBRE 2 | 12,80m² |
| CHAMBRE 3 | 12,20m² |
| CHAMBRE 4 | 12,90m² |
| SALLE DE BAIN | 5,00m² |
| SALLE D'EAU | 6,80m² |
| SOUS TOTAL | 116,80m² |

| SURFACES ANNEES | |
|-------------------|----------------|
| GARAGE | 21,87m² |
| CELLIER | 4,80m² |
| SOUS TOTAL | 26,67m² |



MOULINS HABITAT
29 RUE DE LA FRATERNITE
03000 MOULINS

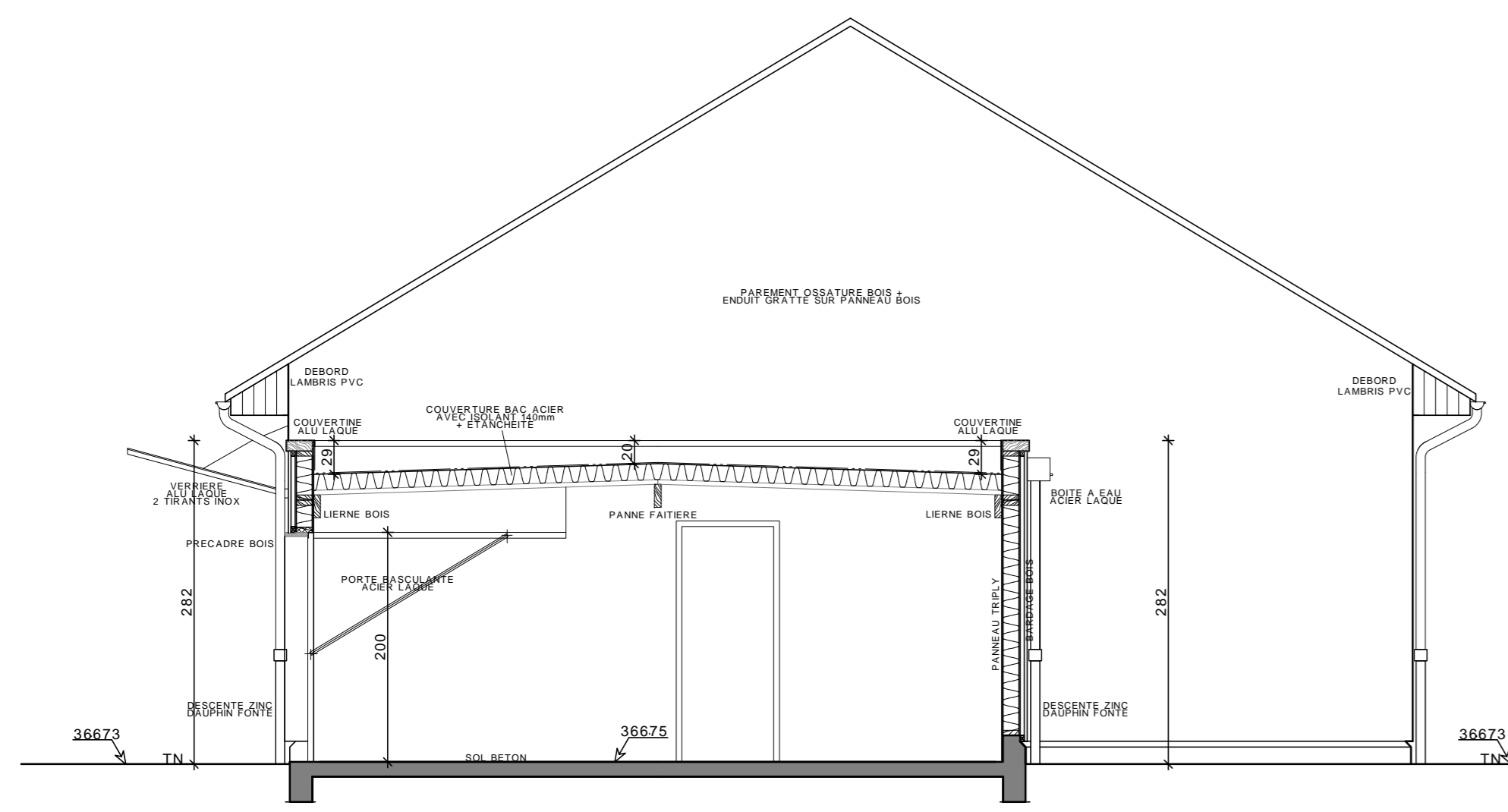
CONSTRUCTION D'UNE GENDARMERIE
ET DE 7 LOGEMENTS
LE CHAMP COUDRAY 03350 CERILLY

PROJET 10a 111204

PLAN LOGEMENT TSA DATE: 31/08/2012
ECHELLE: 1/50 TR

MODIF: a30/01/2013suivant remarques utilisateurs

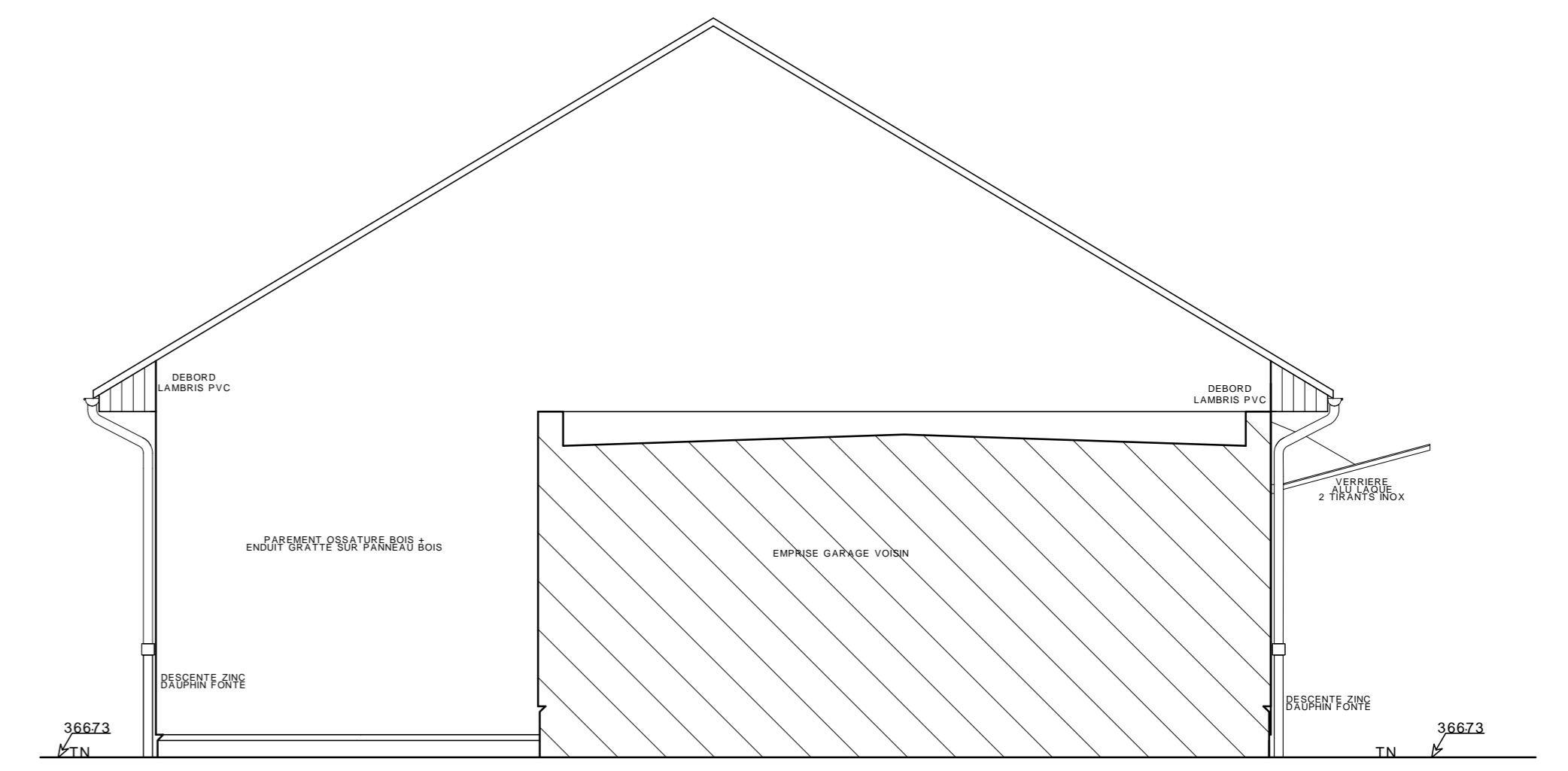
PERRIN RECOLES Architectes Associés
12 RUE BERTIN 03000 MOULINS Tél: 04 70 47 70 70



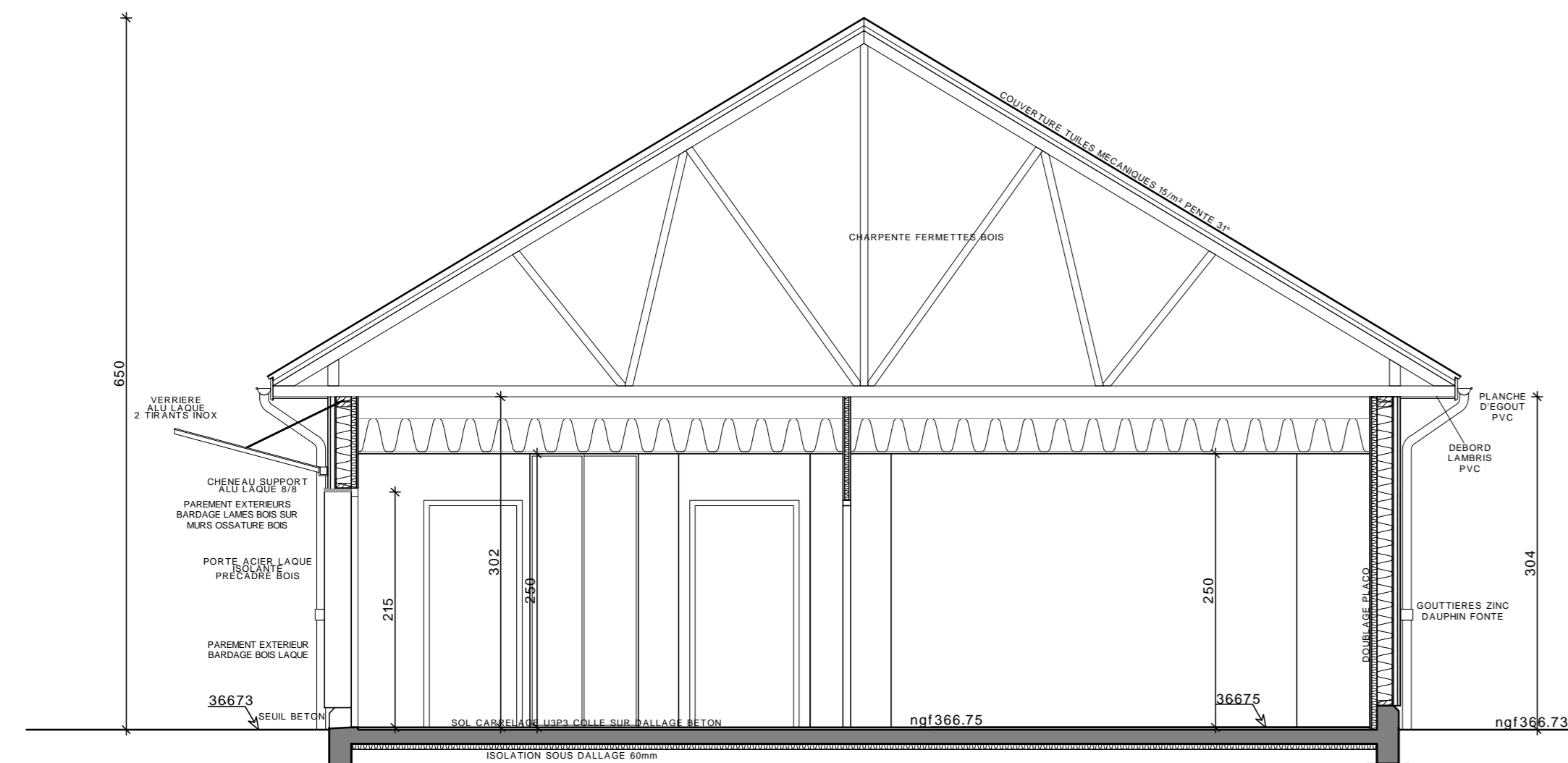
FACADE NORD-OUEST



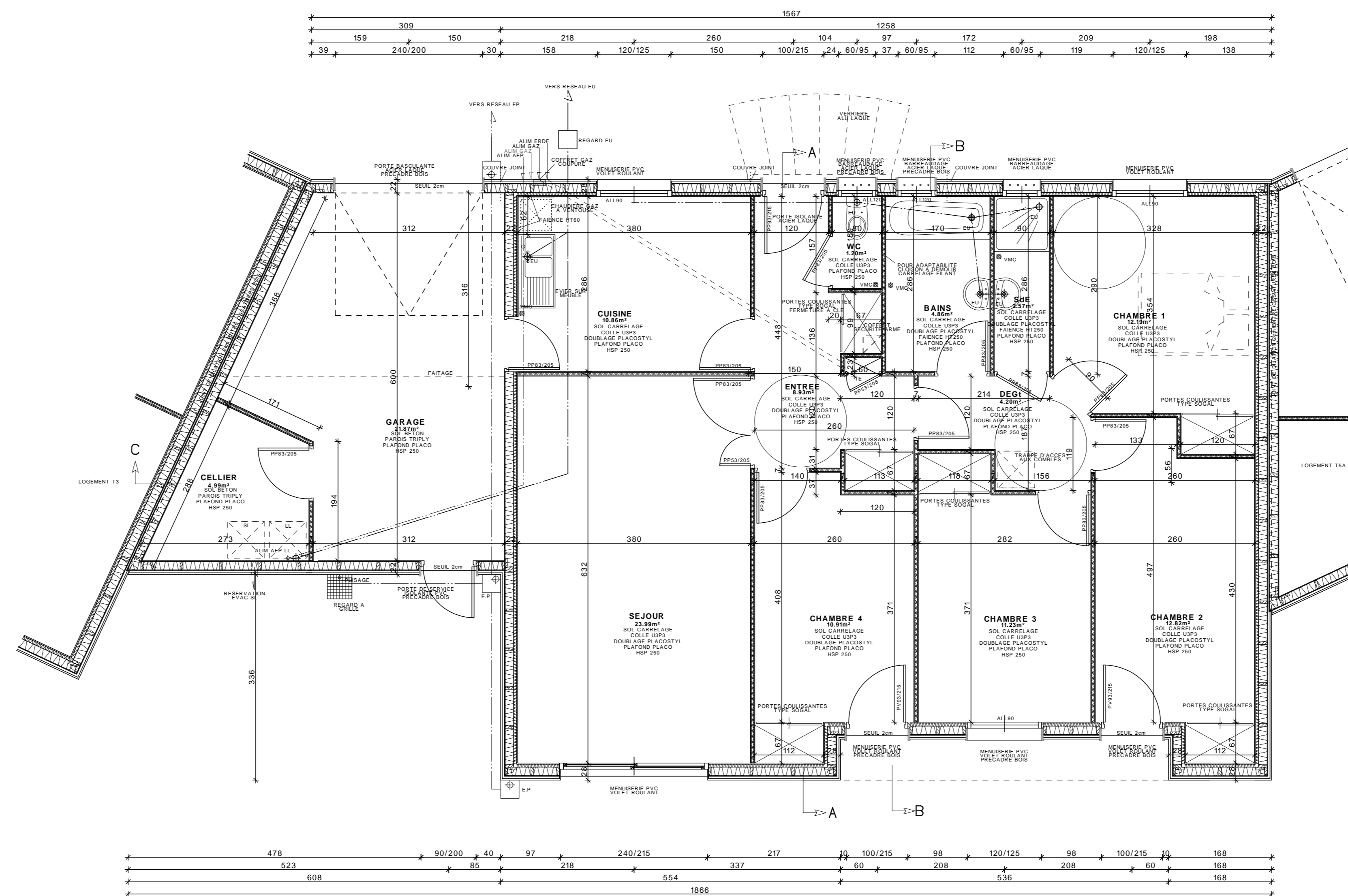
FACADE SUD-EST



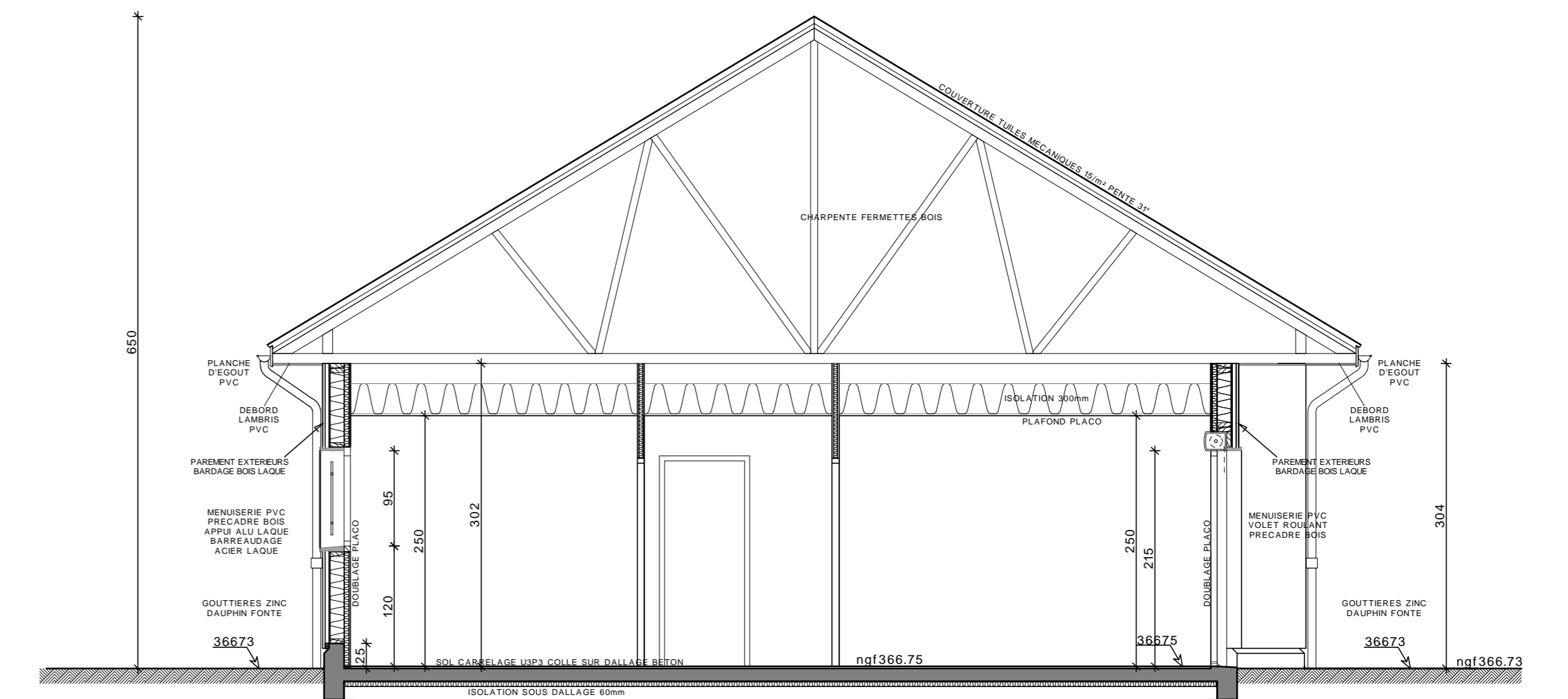
FACADE SUD



COUPE A

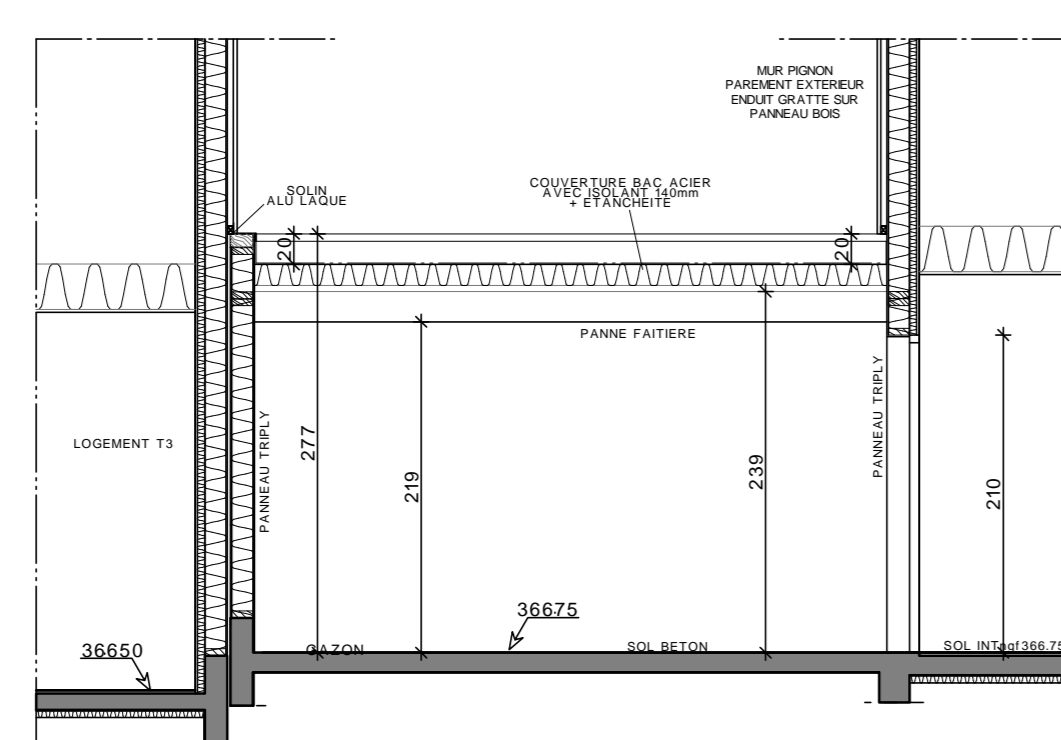


PLAN LOGEMENT T5B

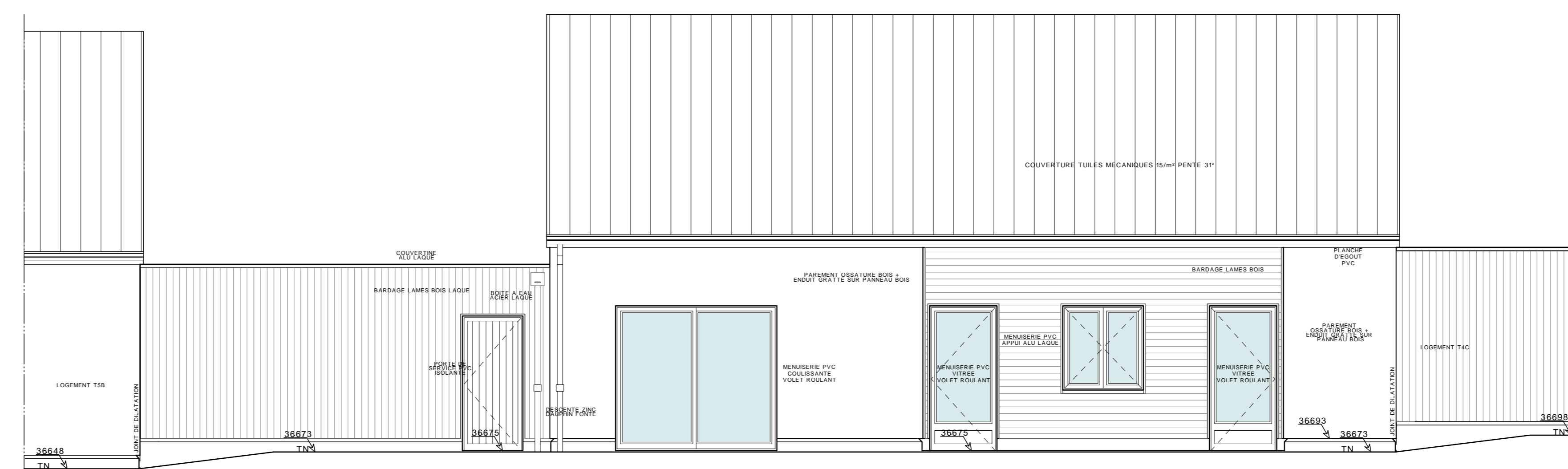


| SURFACES UTILES | |
|-----------------|----------------------|
| ENTREE | 8,30M ² |
| SEC | 1,00M ² |
| CUISINE | 10,80M ² |
| SEJOUR | 23,90M ² |
| DESHABILLANT | 4,20M ² |
| CHAMBRE 1 | 12,10M ² |
| CHAMBRE 2 | 12,80M ² |
| CHAMBRE 3 | 12,20M ² |
| CHAMBRE 4 | 12,90M ² |
| SALLE D'EAU | 5,60M ² |
| SOUS TOTAL | 116,80M ² |

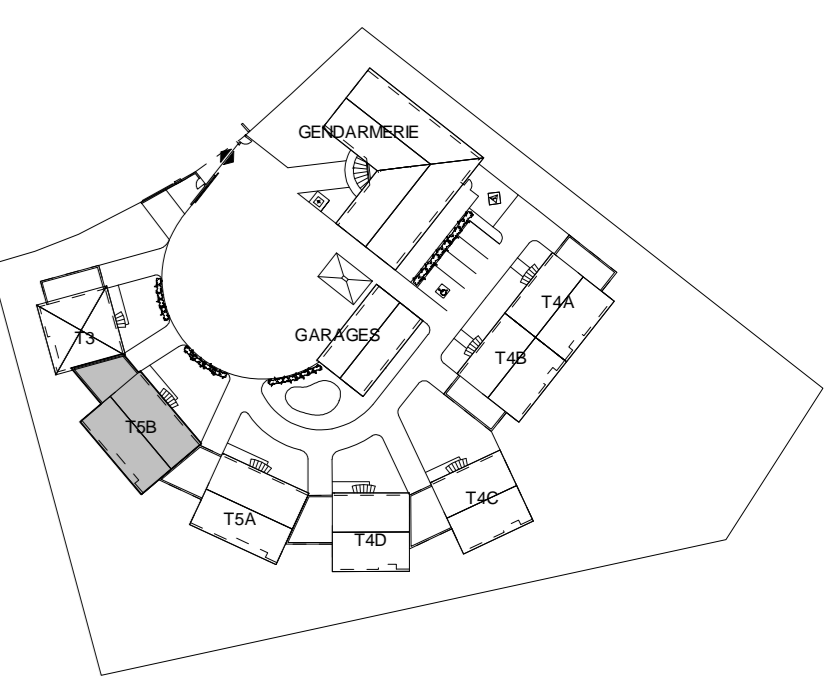
| SURFACES ANNEES | |
|-----------------|----------------------|
| GARAGE | 21,87M ² |
| CELLIER | 4,96M ² |
| SOUS TOTAL | 143,63M ² |



COUPE C



FACADE SUD



MOULINS HABITAT
29 RUE DE LA FRATERNITE
03000 MOULINS

CONSTRUCTION D'UNE GENDARMERIE
ET DE 7 LOGEMENTS
LE CHAMP COUDRAY 03350 CERILLY

| | | |
|-------------------|------------------|--------|
| PROJET | 11a | 111204 |
| PLAN LOGEMENT T5B | DATE: 31/08/2012 | TR |
| ECHELLE: 1/50 | | |

MODIF: a30/01/2013suivant remarques utilisateurs

PERRIN RECOLES Architectes Associés
12 RUE BERTIN 03000 MOULINS Tél: 04 70 47 70 70